



News Letter

Issue 1: January 2010

Welcome to the first addition of our newsletter.

It has now been over 2 years since the acquisition of the goodwill and assets of AE Interior Services by AE Interior Services 2006 Ltd. These 2 years have seen a huge upheaval in the industry but also changes within AE Interiors. With the worst of the credit crunch behind us, and the start of a new decade upon us, now seems like an appropriate time to launch our first news letter as there is quite of things we need to tell you.

Dispute settled

As you may be aware, the company run by the former owners, AE Interior Services Ltd, went in to administration in November 2007. This precipitated extended discussions between ourselves (AE Interior Services 2006 Ltd) and AE Interior Services Ltd. These discussions have finally been concluded.

This welcome news means we are now in a position to move the business forward.

Rebranding

All work will now be carried out under the Prism Brand.

The business has been split into 2 operating companies AE Interior Services 2006 Ltd has been renamed **Prism Care Ltd** and will carry out our customer care and maintenance work, **Prism Interior Services Ltd** will carry out all fit-out, decorating and aesthetics work.

New telephone system and new numbers

As part of our drive to be the lead innovators in the industry we have introduced a new telephone and fax system.

All members of our team now have individual direct-dial telephone and fax numbers.

The system provides conference call facilities, voicemail and enhanced support to our customer care business allowing for out of hours coverage.

Customers can now contact us via local numbers. You can even connect directly to our VOIP systems for free or make us an extension to your internal telephone system.

OrderLine

We have introduced a new customer order line. This allows customers to register orders even if they do not have access to fax or e-mail.

New web site

We have introduced new websites to support the re-organised business. Expect more details in further new letters – but if you can't wait until then! Please visit them at the following addresses:-

New Telephone numbers

Headoffice

Tel 0845 00 47 390

Fax 0845 00 47 391

Interiors

Tel 0845 80 54 230

Fax 0845 80 54 231

Care

Tel 0845 86 84 999

Fax 0845 86 84 998

Regional Centres

London 020 3393 1095

Essex 01245 807789

Kent 01622 808973

Surrey 01483 331746

Hampshire 01256 807543

South coast 02380 982773

Berkshire 0118 3214962

HEADOFFICE - www.prism-services.co.uk

CARE - www.prism-care.co.uk

INTERIORS - www.prism-interiors.co.uk

New orders and new customers

The industry seems to be slowly picking itself up after being ravaged by the credit crunch. Month on month orders have been increasing to a point where the orderbook now stands at pre-credit crunch levels. This recent growth has been achieved by a significant widening of our customer base. We are pleased to welcome **Building Reputations, Heritage Design & Build, RAP Office contractors, Osborne Homes, Persimmon Homes, W.W. Martin and Morgan Jones Contacts** to our team.

Show Pods

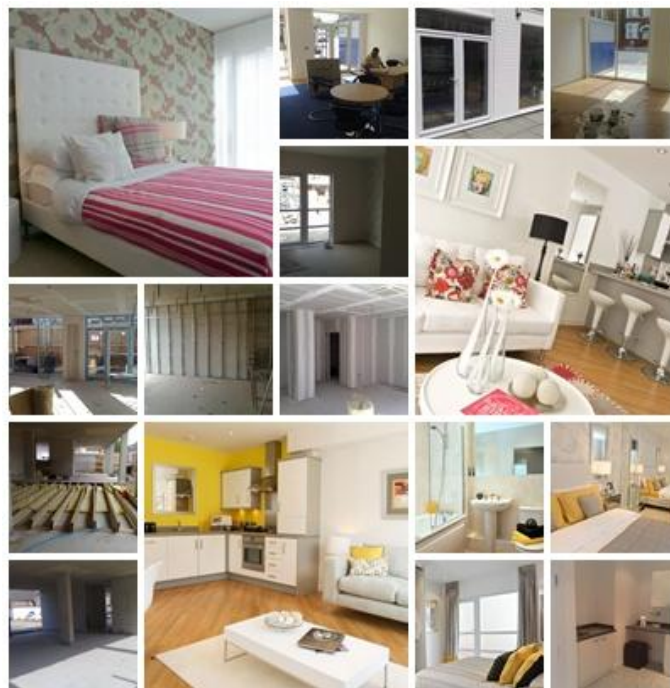
We have recently completed two show pods (below) for Taylor Wimpey. Situated on the ground floor of their Lewisham High Street and Tooting developments, we have constructed a full mock-up of the flats plus a sales area.

The pods will eventually be turned in to commercial units but have proved invaluable for the sales team to drum up business.

Assembling the show pods ahead of the construction of the main structure has given the sales team a head start and a useful tool to help potential customers visualise their final home.

Under tight deadlines and changing specifications the team were able to transform the bare concrete frame in to a fully functioning flat to time and budget.

You can see the



show pods in the flesh at



AXIS

262-274 Lewisham High Street, Lewisham, London, Greater London, SE13 6JX



St Georges Quarter

120-132 Tooting High Street, Tooting, London, SW17 0SY